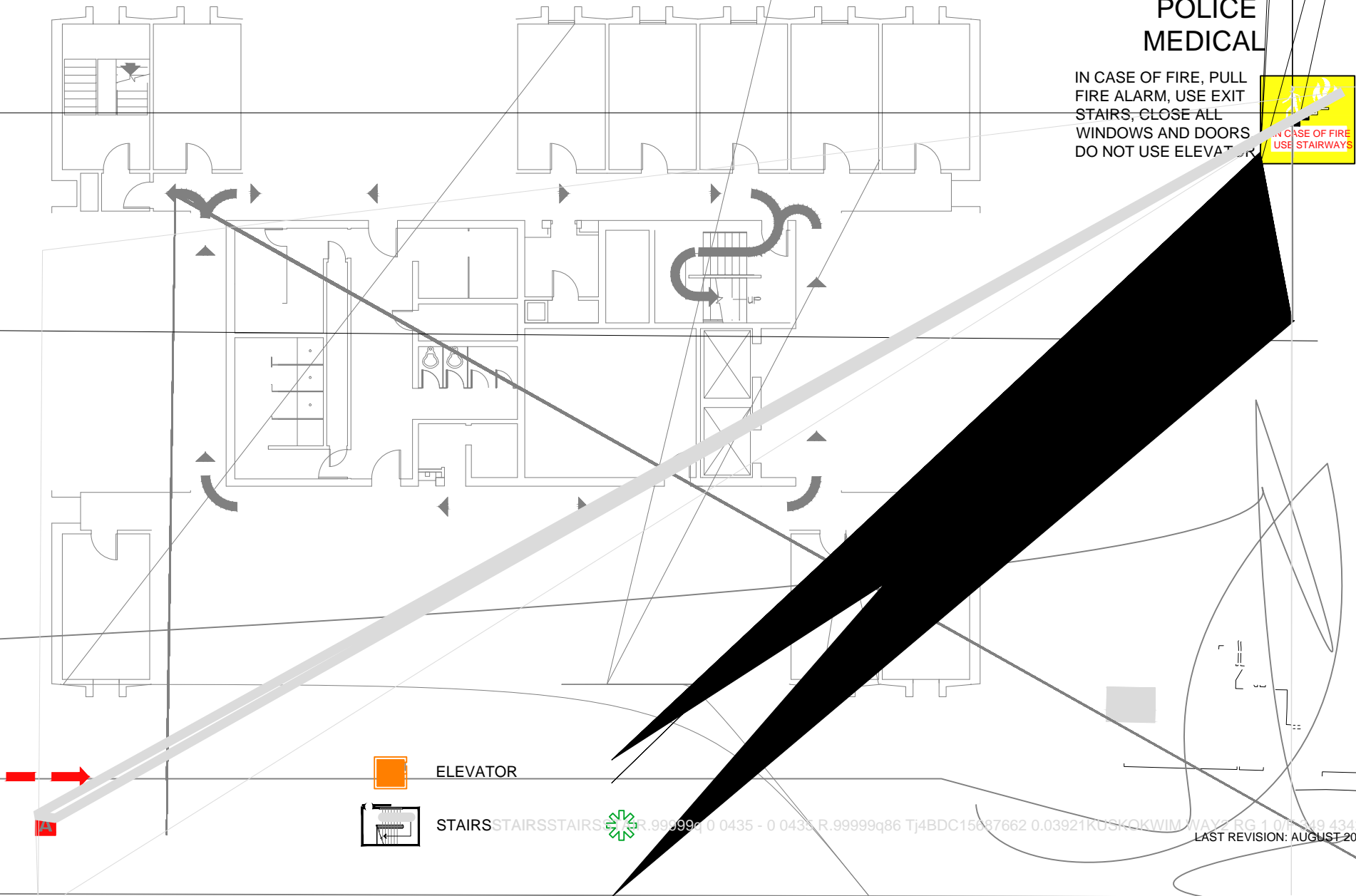


**FIRE  
POLICE  
MEDICAL**

IN CASE OF FIRE, PULL  
FIRE ALARM, USE EXIT  
STAIRS, CLOSE ALL  
WINDOWS AND DOORS  
DO NOT USE ELEVATOR



ELEVATOR



STAIRS STAIRS STAIRS



R.99999q 0 0435 - 0 0435 R.99999q86 Tj4BDC15687662 0.03921KUSKQKWIM/WAY/ RG 1 0/P 19.4342 IRS

LAST REVISION: AUGUST 2016