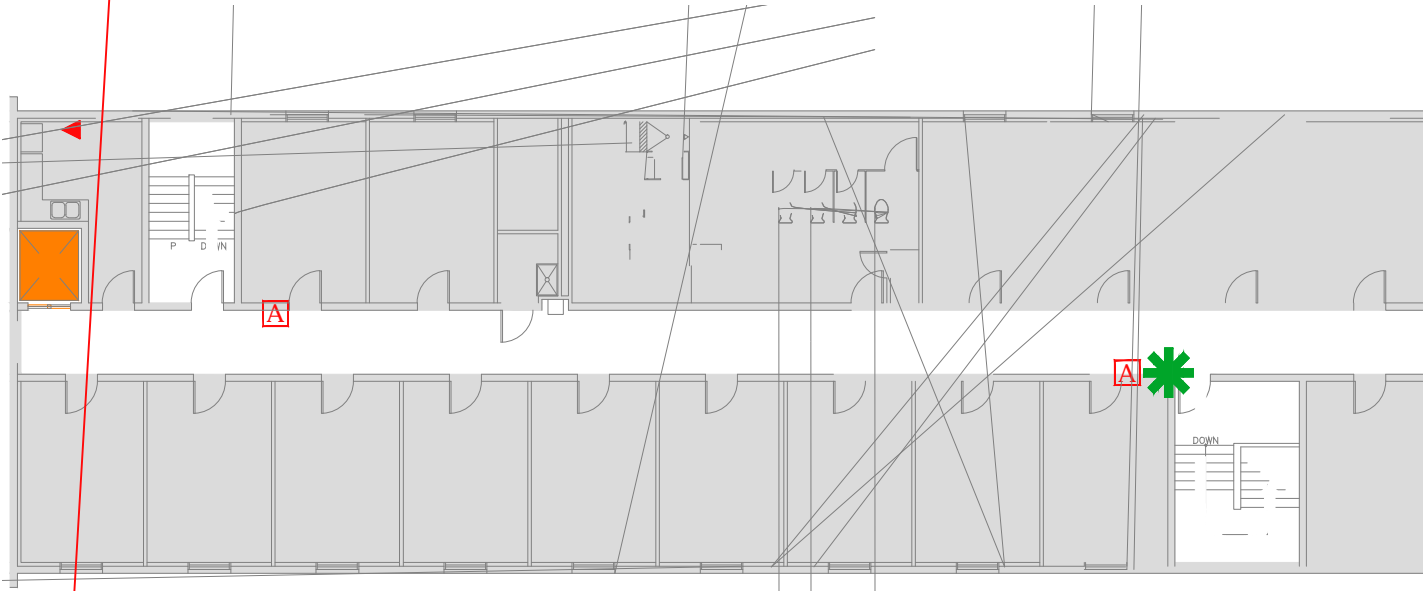



FIRE POLICE MEDICAL

IN CASE OF FIRE, PULL
FIRE ALARM, USE EXIT
STAIRS, CLOSE ALL
WINDOWS AND DOORS,
DO NOT USE ELEVATOR.



 EMERGENCY EGRESS PATH

 ELEVATOR

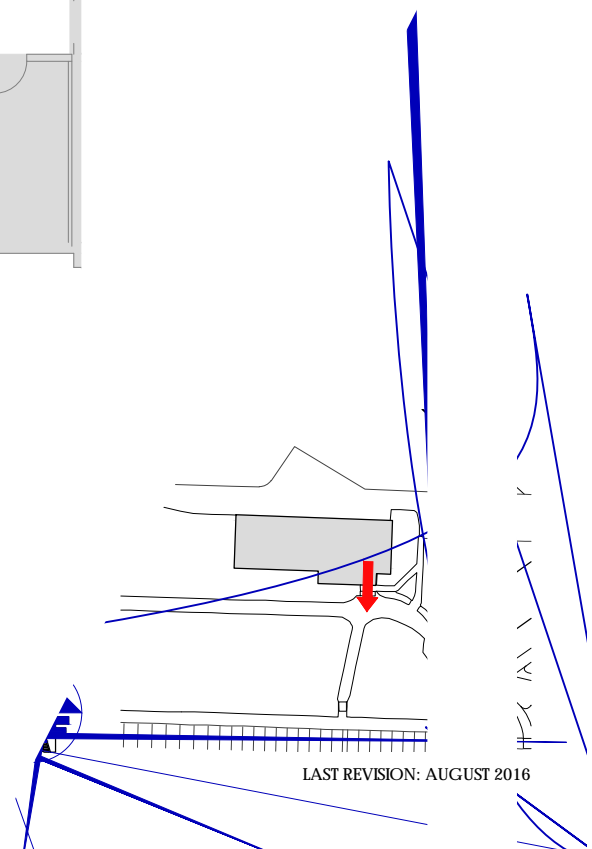
 FIRE EXTINGUISHER



STAIRS LATHROP HALL, FS409



YOU ARE HERE



LAST REVISION: AUGUST 2016